



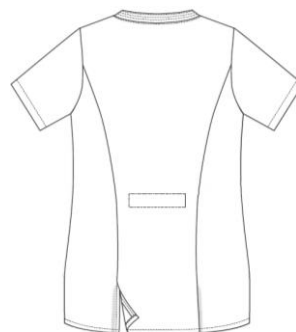
# GREEN WORKWEAR

JUST SUSTAINABLE

## Pflegebluse SOUL EXCELLENCE



Pflegebluse 401001 weiß (210 g/m<sup>2</sup>)  
 Pflegebluse 402001 Farben (190 g/m<sup>2</sup>)  
 50 % recyceltes Polyester /  
 50 % CmiA Baumwolle  
 Lagerware von XS - 4XL

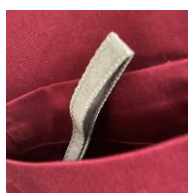
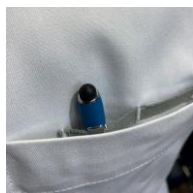


- Pflegebluse mit justierbarer Taillierung
- 2 Hüfttaschen
- 1 Handy-Innentasche
- Schlüsselschlaufen links und rechts in den Taschen
- 1 Brusttasche mit Stifteschlaufen
- Flex Fix Druckknöpfe
- geeignet für industrielle Wäsche

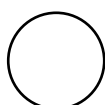
**GRÜNER  
KNOPF**  
SOZIAL. ÖKOLOGISCH. STAATLICH.  
UNABHÄNGIG ZERTIFIZIERT.



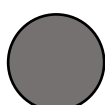
SUPPORTING THE INITIATIVE  
**COTTON MADE IN AFRICA**



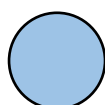
| Größe           | XXS  | XS   | S    | M    | L    | XL   | 2XL  | 3XL  | 4XL  | 5XL  | 6XL  | Toleranz   |
|-----------------|------|------|------|------|------|------|------|------|------|------|------|------------|
| 1/2 Brustumfang | 44   | 48   | 52   | 56   | 60   | 66   | 72   | 78   | 84   | 90   | 96   | +/- 1,0 cm |
| 1/2 Hüftweite   | 44   | 48   | 52   | 56   | 60   | 66   | 72   | 78   | 84   | 90   | 96   | +/- 1,0 cm |
| Rückenlänge     | 70,5 | 71,5 | 72,5 | 73,5 | 74,5 | 75,5 | 76,5 | 77,5 | 78,5 | 79,5 | 80,5 | +/- 1,5 cm |
| Ärmellänge      | 24   | 24,5 | 25   | 25,5 | 26   | 26,5 | 27   | 28   | 29   | 30   | 3    | +/- 1,0 cm |



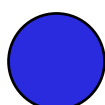
weiß  
00



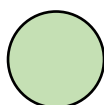
schiefergrau  
09



hellblau  
11



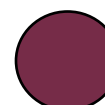
royalblau  
15



mint  
21



petrol  
23



bordeaux  
47

(Farben können ggf. abweichen)