



# GREEN WORKWEAR

JUST SUSTAINABLE

## Care blouse SOUL COMFORT



- Care blouse 403001 (195 g/m<sup>2</sup>) with adjustable waist
- 50% recycled polyester / 50% CLY (tencel)
- 2 hip pockets
- Key loops on the left and right in the pockets
- 1 breast pocket with pen loops
- Flex Fix press-buttons
- Suitable for industrial laundry



Size	XXS	XS	S	M	L	XL	2XL	3XL	4XL	5XL	6XL	Tolerance
½ Chest size	44	48	52	56	60	66	72	78	84	90	96	+/- 1,0 cm
½ Hip size	44	48	52	56	60	66	72	78	84	90	96	+/- 1,0 cm
Back length	70,5	71,5	72,5	73,5	74,5	75,5	76,5	77,5	78,5	79,5	80,5	+/- 1,5 cm
Sleeve length	24	24,5	25	25,5	26	26,5	27	28	29	30	30	+/- 1,0 cm



white  
00



light blue  
11



azzurro  
13



apple green  
22



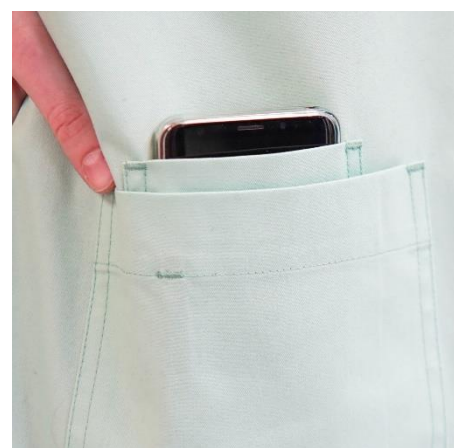
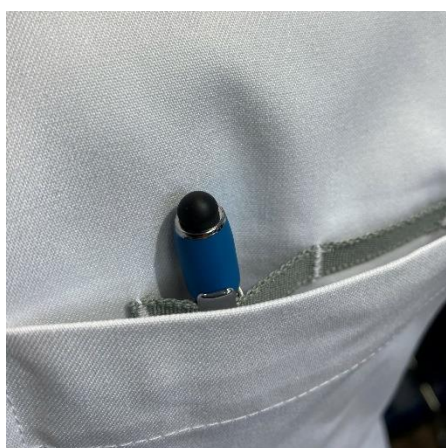
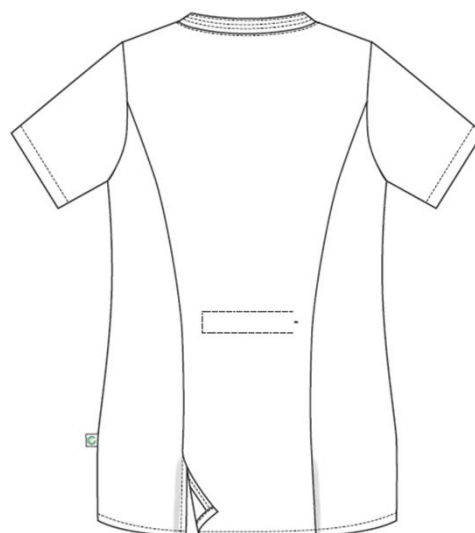
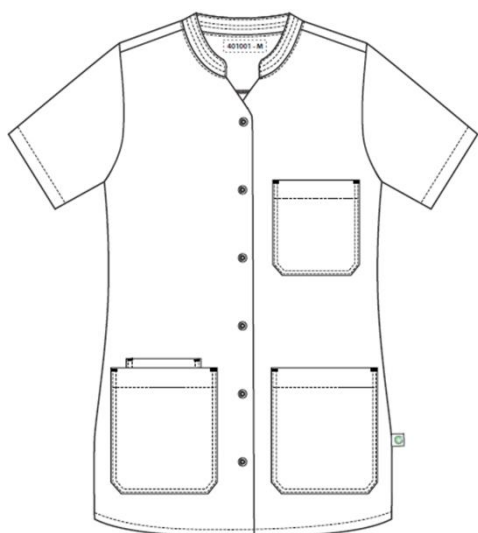
plum  
46

(Colours may differ)

# Care blouse SOUL COMFORT

Care blouse 403001 (195 g/m<sup>2</sup>)

50% recycled polyester / 50% CLY (tencel)



**Green Workwear GmbH**  
Hauptstraße 22  
D-87452 Altusried

Tel.: +49 (0)8373 9238922  
Mail: [info@greenworkwear.de](mailto:info@greenworkwear.de)  
[www.greenworkwear.de](http://www.greenworkwear.de)

  
**GREEN WORKWEAR**  
JUST SUSTAINABLE