



**GREEN WORKWEAR**  
JUST SUSTAINABLE

## Tunic SOUL EXCELLENCE



- Unisex tunic with comfortable collar shape
- 2 hip pockets
- 1 inside phone pocket
- Key loops on the left and right in the pockets
- 1 breast pocket with pen loops
- Suitable for industrial laundry
- (stock items from XS – 4XL)



Size	XXS	XS	S	M	L	XL	2XL	3XL	4XL	5XL	6XL	Tolerance
½ Chest size	47	51	55	59	63	68	73	78	83	88	93	+/- 1,0 cm
½ hip size	48,5	52,5	56,5	60,5	64,5	69,5	74,5	79,5	84,5	89,5	94,5	+/- 1,0 cm
Back length	74,5	75,5	76,5	77,5	78,5	79,5	80,5	81,5	82,5	83,5	84,5	+/- 1,5 cm
Sleeve length	26	27	28	29	30	31	32	33	34	35	36	+/- 1,0 cm



white  
00



slate grey  
09



light blue  
11



royal blue  
15



mint  
21



petrol  
23



bordeaux  
47

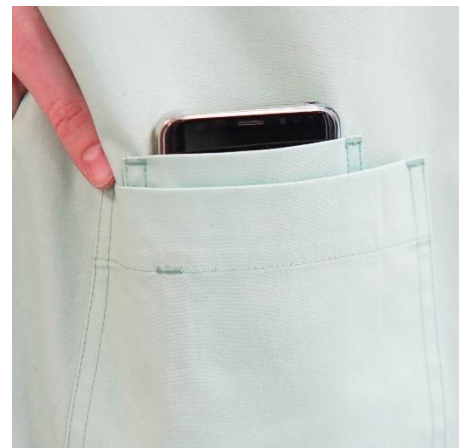
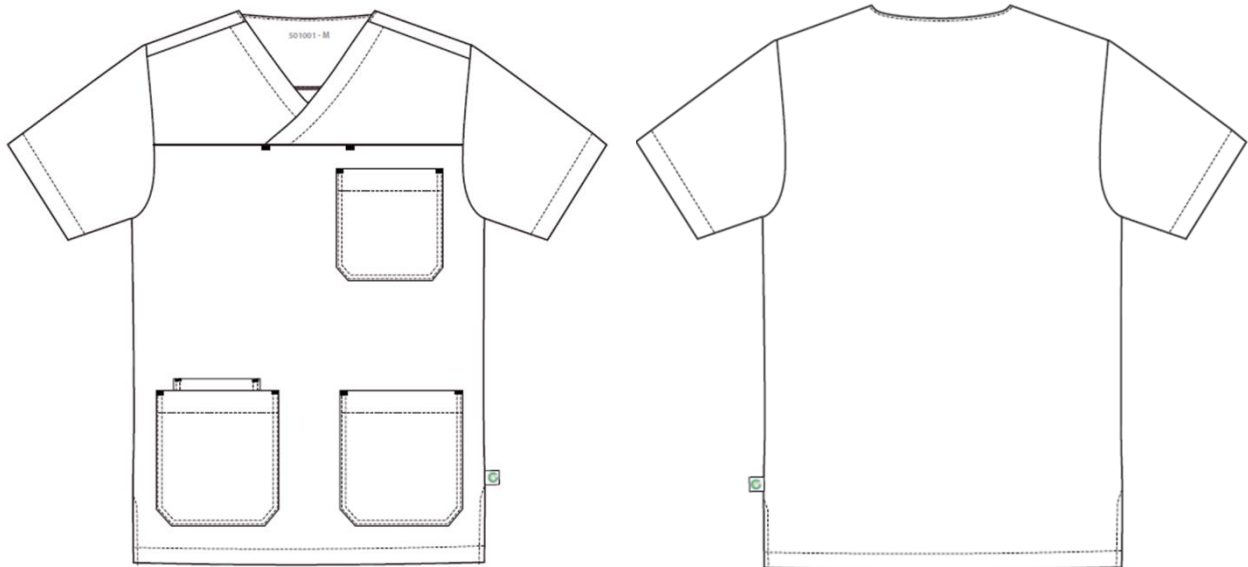
(Colours may differ)

# Tunic SOUL EXCELLENCE

Tunic 502001 coloured (190 g/m<sup>2</sup>)

Tunic 501001 white (210 g/m<sup>2</sup>)

50% recycled polyester / 50% CmiA cotton



**Green Workwear GmbH**  
Hauptstraße 22  
D-87452 Altusried

Tel.: +49 (0)8373 9238922  
Mail: [info@greenworkwear.de](mailto:info@greenworkwear.de)  
[www.greenworkwear.de](http://www.greenworkwear.de)

  
**GREEN WORKWEAR**  
JUST SUSTAINABLE